

Ouvertüre zu Goethes Trauerspiel „Egmont“

Violine II

L. van Beethoven, op.84

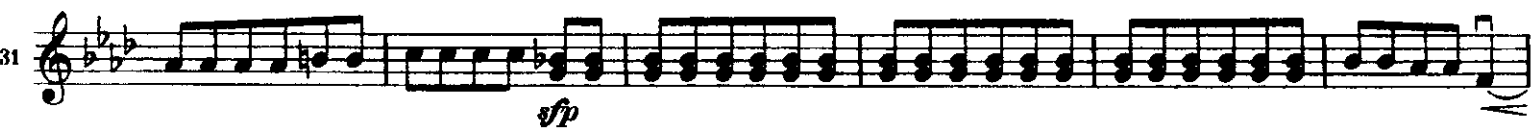
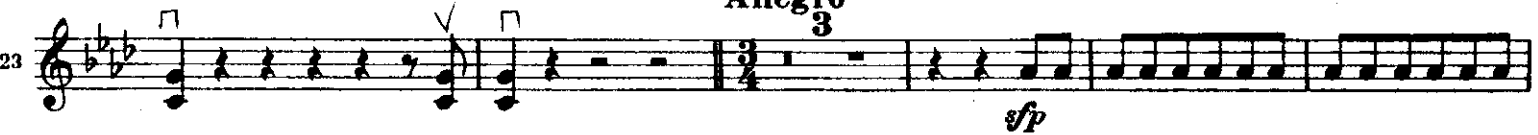
Sostenuto, ma non troppo

marcato



Allegro

3



Violine II

86 *ff* *ff* *f* 2 6

99 *ff* *sf* *sf* *sf*

103 *f* 1 V

110 *sf* *sf* *sf* *sf* *sf* *sf*

116 C *f* *p*

122 V *f* *p*

128 V *f* *p*

134 *f*

140 *p* *p*

146 V V 9 Vc.

162 D *sfp* *sfp*

168 V V V V

Detailed description: This page of a musical score for Violine II contains 11 staves of music, numbered 86 to 168. The key signature is three flats (B-flat, E-flat, A-flat). The score includes various dynamic markings such as *ff*, *f*, *sf*, *sfp*, and *p*. Performance instructions include accents (*acc.*), breath marks (*bre.*), and vibrato (*v.*). Fingerings are indicated by numbers 1, 2, and 6. A section labeled 'C' begins at measure 116, and a section labeled 'D' begins at measure 162. The music features a mix of melodic lines and dense chordal textures.

Violine II

176 *p* *cresc.*

183

190 *ff* *ff* *E* *V V*

199 *f sf sf sf*

208 *V V V V V V V*

215 *sf sf sf sf sf sf*

223 *ff ff ff* *F* *V* *2* *2* *6*

241 *f ff sf sf*

245 *sf sf* *G* *V*

250 *sf sf sf sf sf sf*

259 *p p* *3* *4*

274 *ff sf* *4* *Ob.* *Klar.*

Detailed description: This is a page of a musical score for Violine II, spanning measures 176 to 274. The music is written in a single staff with a treble clef and a key signature of three flats (B-flat, E-flat, A-flat). The score includes various dynamic markings such as *p* (piano), *cresc.* (crescendo), *ff* (fortissimo), *f* (forte), and *sf* (sforzando). There are also performance instructions like *V* (vibrato), *E* (accents), and *Ob.* / *Klar.* (Oboe / Clarinet). The score features several measures with triplets and sextuplets, and some measures with specific fingering or bowing techniques indicated by numbers like 2, 3, 4, and 6. The music is characterized by a mix of rhythmic patterns, including eighth and sixteenth notes, and rests.

