

"SLEEPING BEAUTY"

Suite

P. Tschaikowsky, Op. 66a

№ 1. INTRODUCTION. LA FÉE DES LILAS.

Violoncello.

Allegro vivace.

5

9

13

17

20

24

28

fff

mf

p

pp

pp

pizz.

Violoncello.

38 *arco*
p *pp*

45 *pizz.*
mp *mf*

51 *arco*
crescendo *f*

56 *ff* *crescendo* *fff*

62 *Più mosso.* *rit. molto*
fff

73 *Andante sostenuto.*
pizz. *p*


81 *arco*


82


83


84


Violoncello.

85 

86 *mp* 

87 

88  *pizz.*
p

92  *pp* 8

No 2. Adagio. Pas d'action.

Andante.


16


Adagio maestoso.

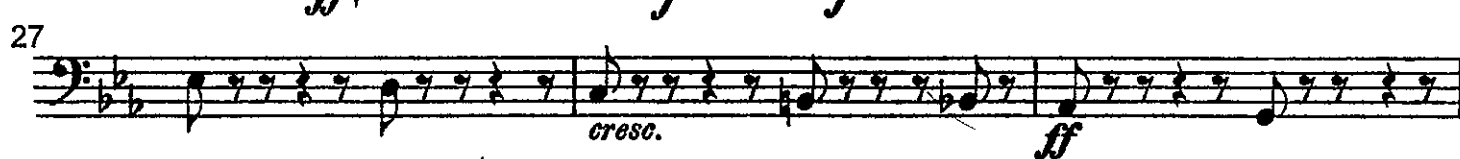
2


1


pizz.

 *f* *cresc.*

23  *arco* *pizz.* *ff* *f* *f*

27  *cresc.* *ff*

30  *arco* *piano* *V* *f*

33  *ff*

Violoncello.

C?
↓

38 *poco stringendo*
p cre - - - scen - - - do

42 *f* *V* *ff* *Più mosso.* *V*

45 *ritenuto* *V*

48 *Tempo I.* *V* *V* *V* *V*

50

52 *f* *V* *V* *V*

55 *mf* *V* *V*

61

63 *fff*

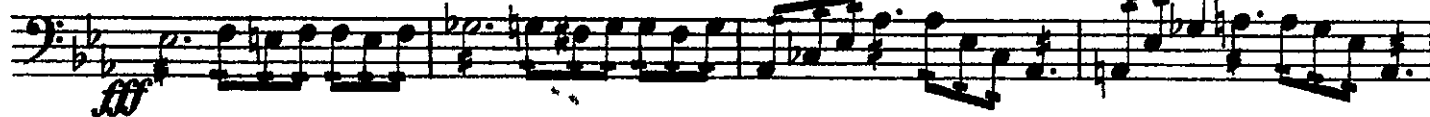
Violoncello.

65



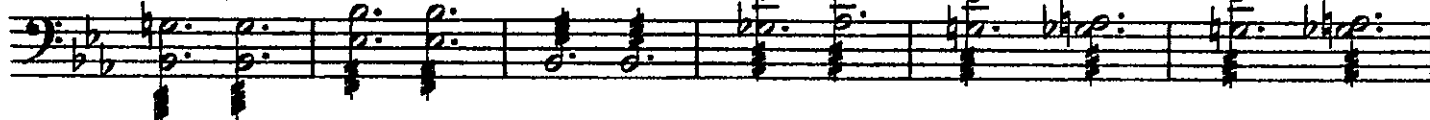
68

Molto sostenuto, quasi più Andante. *poco stringendo*



72

Tempo I.



78



Nº 3. Pas de caractère.

Le Chat botté et la chatte blanche.

Allegro moderato. (♩ = 92.)
con sordino



9

Moderato. (♩ = 92.)



23



35



40



No 4. Panorama.

Violoncello.

Andantino. (♩ = 138)

pizz.

6

12

18

espressivo
arco

24

pizz.

30

36

42

1. arco 2. arco

48

pizz.

54

No 5. Valse.

Violoncello.

Allegro. (Tempo di Valse)

ff *p* *cre - - scen - - do* *mp* *cre - -*

7 *- scen - - do* *mf* *cresc.* *f*

14 *cre - - scen - - do* *ff*

21

29

37 *4* *cantabile* *p*

49 *più f* *f*

57 *f* 1

Violoncello.

186

f *p*

197

f

209

ff

219

ff

228

ff

237

p 3 *pizz.*

249

più f *f*

258

p

267

f *ff* *arco*

277

f

289

f