

# Suite champêtre

I  
Piece Caractéristique

Jean Sibelius, Op. 98b

Commodo

$\eta$   $\eta$



*pp*

9

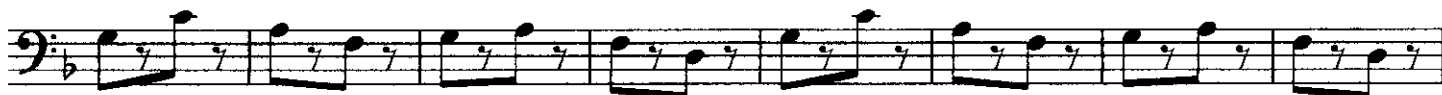


18



*poco a poco stretto e cresc.*

26



34



42

A



*p e poco a poco cresc.*

50



58



*sf >*

66

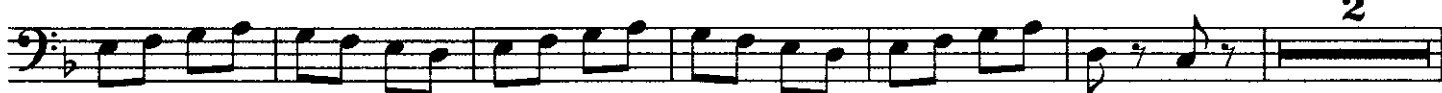


*f*

*poco dim. ed allarg. al*

72

Tempo I



*p*

2

80 pizz. arco *poco f* *mf*

91 arco *f*

II  
Mélodie Élégiue

poco adagio 5 *mezza fz poco f*

10 *dim.*

16 **A** *p cresc. poco a poco f*

22 *fz poco f*

27 *poco a poco dim.* 2 *p*

Allegretto. III  
Danse

4 pizz. *mf*

12 arco

25 pizz. risoluto **A** *rfz* *f*

35 *meno* risoluto *rfz*

45 arco *mf*

53 *f* *f*

60 *p* *poco cresc.*

66 *f* ten. pizz.