

Violoncello

Leo Delibes

Valse and Czardas
from
Coppelia

Valse and Czardas from *Coppelia*

Valse

Leo Delibes

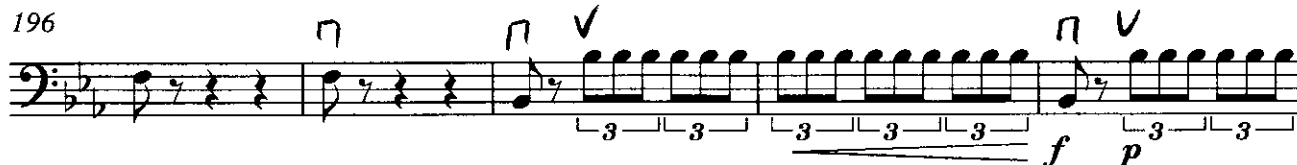
146 4 Tempo di Valse ♩=160
pizz.



154



162



Violoncello

217



224



231



239



246



253



260



268



Czardas
Violoncello

4
990 **Allegro Marcato** ♩ = 90
ff

993 *rall.*

997 **Moderato** ♩ = 80
f

1001 1.

1002 2. unis.

1005 29 unis. *ff*

Violoncello

1007



1009



1011



1015



V.S.

Violoncello

6
1019 30 Allegretto $\text{♩} = 120$
legg.
p

1028

1035 31

1042

1051

1059 32
ff

1067

1072 *div.*

Violoncello

1076 33

p

Violoncello part for measures 1076-1083. The staff is in bass clef with a key signature of two sharps (F# and C#). The music features a complex rhythmic pattern with many sixteenth and thirty-second notes. Dynamic marking *p* is present at the start.

1084

unis

Violoncello part for measures 1084-1090. The music continues with similar rhythmic complexity. A dynamic marking *f* appears at the end of the line. The word *unis* is written above the staff.

1091

f

Violoncello part for measures 1091-1098. The music continues with similar rhythmic complexity. A dynamic marking *f* is present at the end of the line.

1099 **Presto** ♩=148

ff

Violoncello part for measures 1099-1106. The tempo is marked **Presto** with a metronome marking of ♩=148. The dynamic marking *ff* is present at the start.

1107

Violoncello part for measures 1107-1114. The music continues with similar rhythmic complexity.