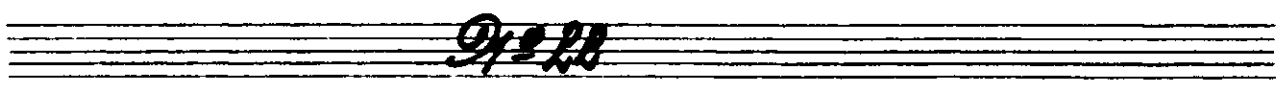
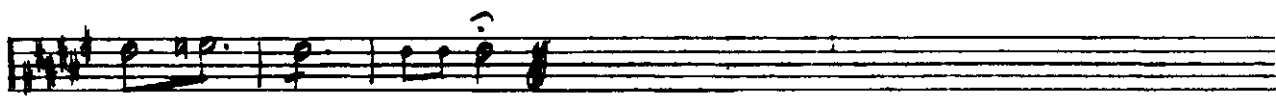


49 *Alllegro non troppo* 50

51 *ff* 17 52 *Stesso tempo* 10 24 34 *f* 53 *Più mosso* 8



*allegro molto* 54 *Andantino* *Piston Solo.* 19

*Molto più mosso* *Piston* 55 *Presto* *ff* 56 *ff* 57 *mf cresc.* *f* 1/8

Tchaikovsky — Swan Lake, Op. 20

7 B

24

Two staves of musical notation. The first staff contains measures 24 and 25, featuring a melodic line with various note values and rests. The second staff contains a rhythmic accompaniment with eighth and sixteenth notes.

*9/8*

*Tempo di ma gürko*

Two staves of musical notation. Measure 26 begins with a dynamic marking of *f*. Measure 27 includes a fermata over a note and a dynamic marking of *ff*.

Two staves of musical notation. Measure 28 starts with a dynamic marking of *f*. Measure 29 includes a dynamic marking of *p*. Measure 30 features a first ending bracket with two endings.

Two staves of musical notation. Measure 31 includes a dynamic marking of *f*. Measure 32 includes a dynamic marking of *p*. Measure 33 includes a dynamic marking of *f*.

Two staves of musical notation. Measure 34 includes a dynamic marking of *f*. Measure 35 includes a dynamic marking of *ff*. Above the first staff, there are markings for woodwinds: *62 Clar.*, *63 ob. Cl.*, and *64 Wood.*

Two staves of musical notation. Measure 36 includes a dynamic marking of *f*. Measure 37 includes a dynamic marking of *p*.

781

25

67 *ff*

68 *ff* 69 *Più mosso*

70

*Allegro* 70 *Oboe Solo* 71 *Pro. II.* 72 *rit. alce*

73 *Allegro vivo* *Corn* 74 *Più sottotempo* *ff*

75 *ff* 3