

Tchaikovsky — Swan Lake, Op. 20

96-112 0811

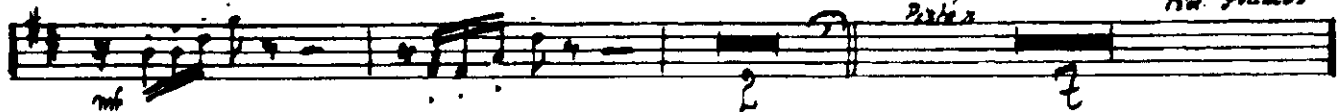
36 *Allegro moderato*



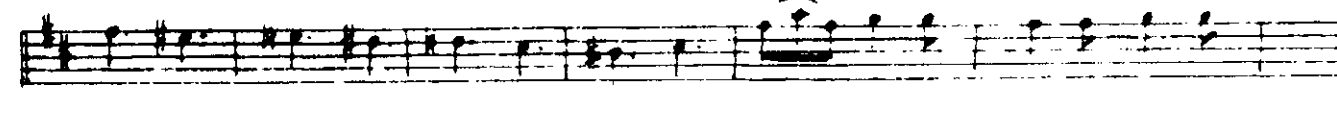
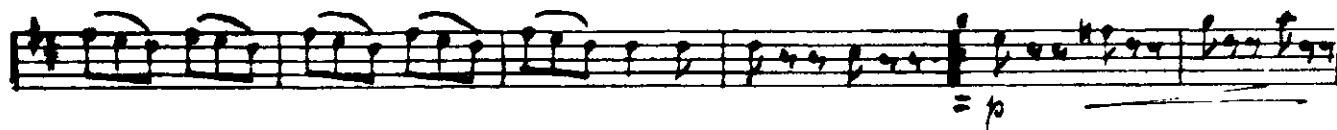
34 *Andantino quasi mod^{to}*



Molto più mosso
Al. Flauto



35 *Presto*



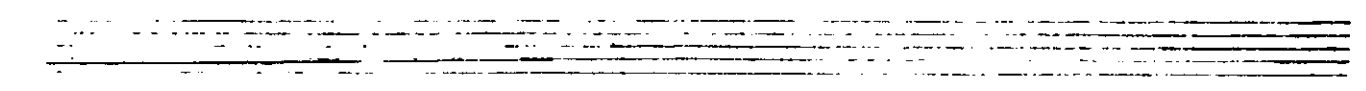
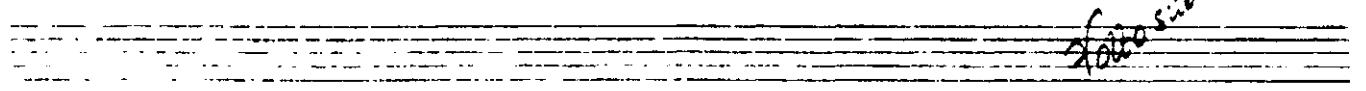
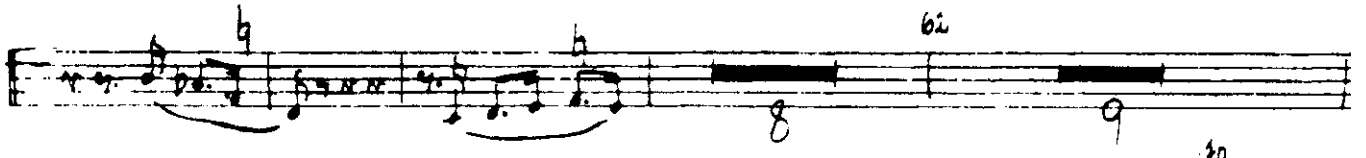
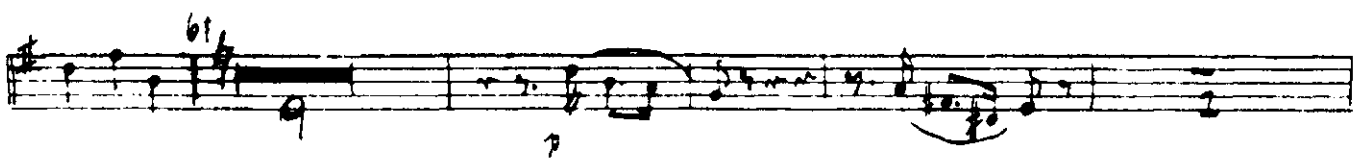
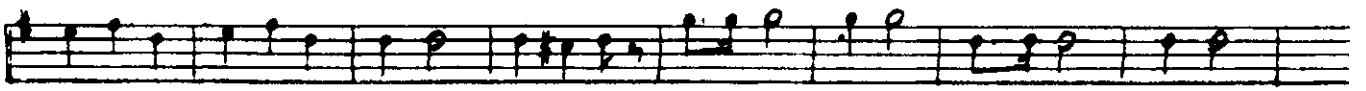
Tchaikovsky — Swan Lake, Op. 20

OB II



96 = 23

Tempo di Mazurka



fatto subito

Tchaikovsky — Swan Lake, Op. 20

08 11

38

p

63

p cresc *mf cresc.*

65

66

67

68

69 *Piu mosso*

p