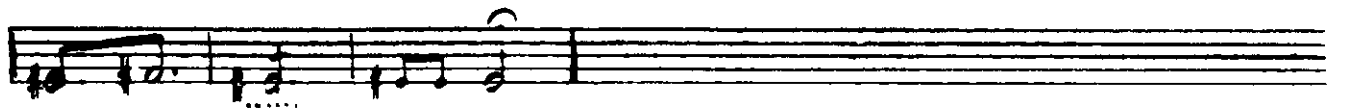
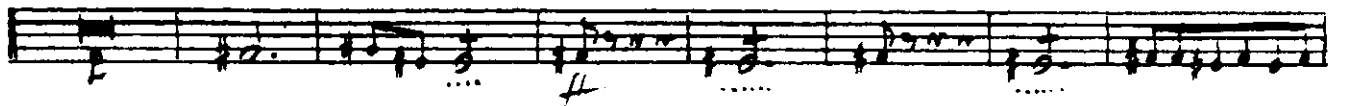
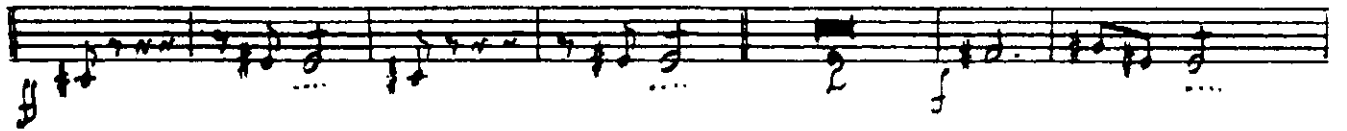
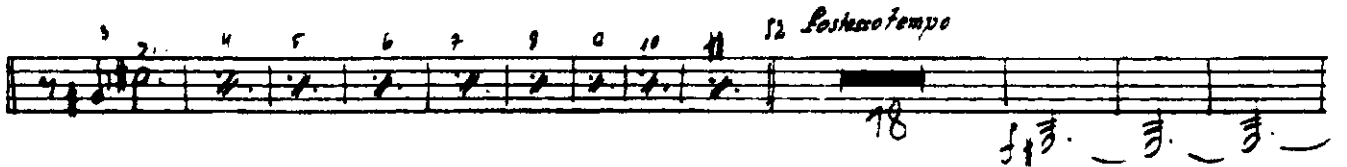
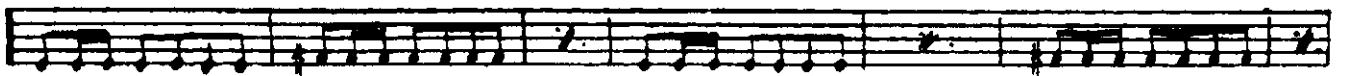
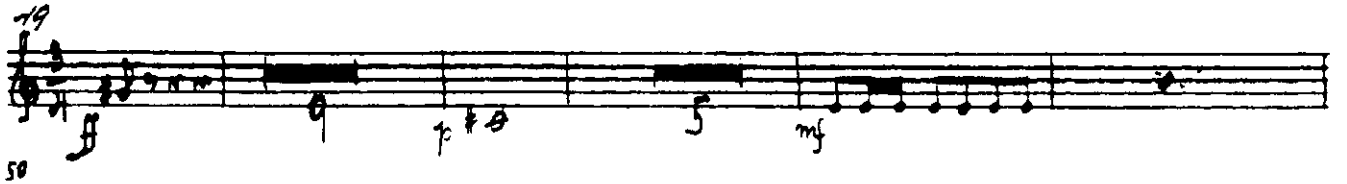
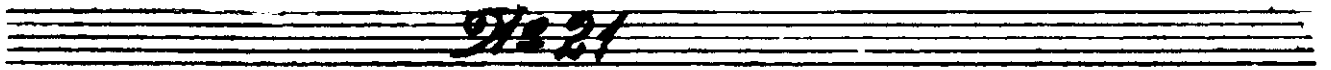


Tchaikovsky — Swan Lake, Op. 20

H 11



*Molto più mosso*

*55 Presto*

Musical score for the first section, measures 55-58. The music is written on six staves. The first staff begins with a treble clef and a key signature of one flat. The tempo is marked *Molto più mosso* and *55 Presto*. The first staff has a *p* dynamic marking. The second staff has a *ff* dynamic marking. The third staff has a *p* dynamic marking. The fourth staff has a *ff* dynamic marking. The fifth and sixth staves continue the melodic and harmonic development. Measure numbers 55, 56, 57, and 58 are indicated at the beginning of their respective staves.

*9/2 23*

*Tempo di Mazurka*

*58*

Musical score for the second section, measures 58-62. The music is written on six staves. The first staff begins with a treble clef and a key signature of one flat. The tempo is marked *Tempo di Mazurka*. The first staff has a *ff* dynamic marking. The second staff has a *ff* dynamic marking. The third staff has a *ff* dynamic marking. The fourth staff has a *p* dynamic marking. The fifth and sixth staves continue the melodic and harmonic development. Measure numbers 58, 59, and 60 are indicated at the beginning of their respective staves. The sixth staff includes first and second endings, marked with '1.' and '2.'

60

61 62 63 64 65 66 67 68

24 16 8 12 mf

*f* *p* *f*

*92 24*

*Allegro* 70

20 1/8