

ANTONIO VIVALDI

CONCERTO in SOL MINORE



per Violino, Archi e Organo (o Cembalo)

L' Estate

Op. VIII n. 2 - F. I n. 23

(G. F. Malipiero)

Nelle pubbliche esecuzioni
è obbligatorio inserire nei
programmi il nome del revisore

VIOLA

Allegro non molto

5

10

15

20

25

30

Allegro

35

40

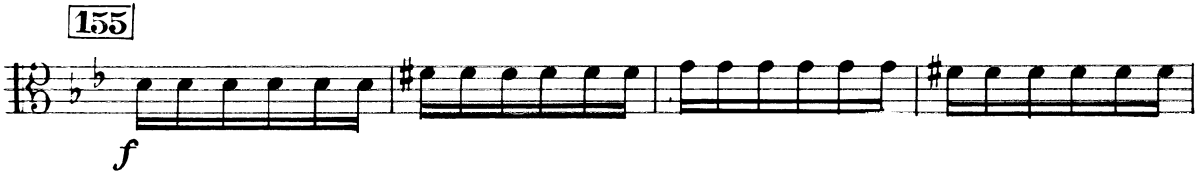
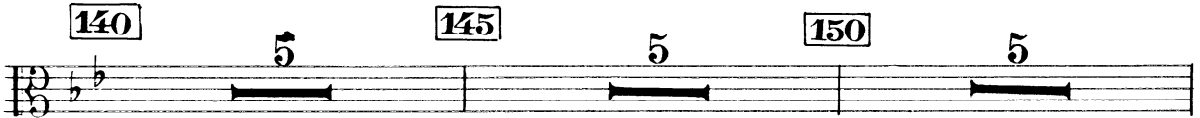
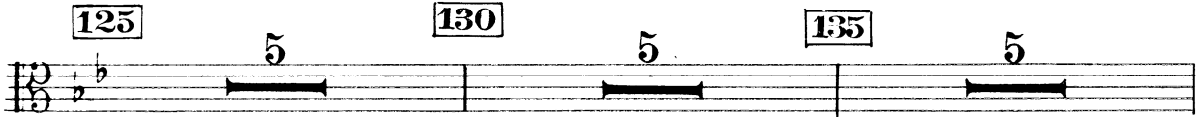
45

50

55

1

Musical score for a piano piece, measures 60-110. The score is written in treble clef with a key signature of two flats (B-flat and E-flat). The tempo is marked with a box containing the number 60. The score consists of ten staves of music. The first staff contains measures 60-70, with a dynamic marking of *p*. The second staff contains measures 71-80, with a dynamic marking of *p*. The third staff contains measures 81-90, with dynamic markings of *pp*, *p*, *pp*, and *p*. The fourth staff contains measures 91-100, with dynamic markings of *pp*, *p*, *pp*, and *f*. The fifth staff contains measures 101-110, with dynamic markings of *f*, *f*, *f*, *f*, *f*, *f*, *f*, *f*, *f*, and *f*. The score includes various musical notations such as slurs, accents, and dynamic markings. The piece concludes with a final chord marked with a box containing the number 110 and the letters *p*, *f*, and *v*.



175 Adagio 2 ff ff Presto *f*

Adagio 1 180 2 Presto *f*

Adagio 1 185 5

190 Presto Adagio 2 *f*

Presto 195 Adagio *f*

Presto *f*

200

205 1

210



215



220



225



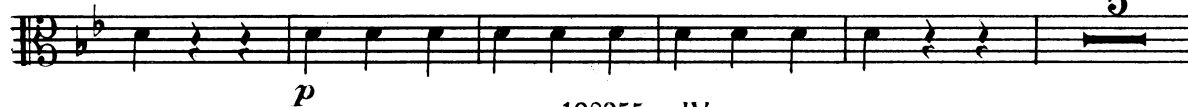
230



235



240



245

5

p

250 1 *f* *acc* *v*

255

260

265

270 5

275 5 280 1

285

290

